

## Studio 8

Area 238 m2 (2561 ft2)

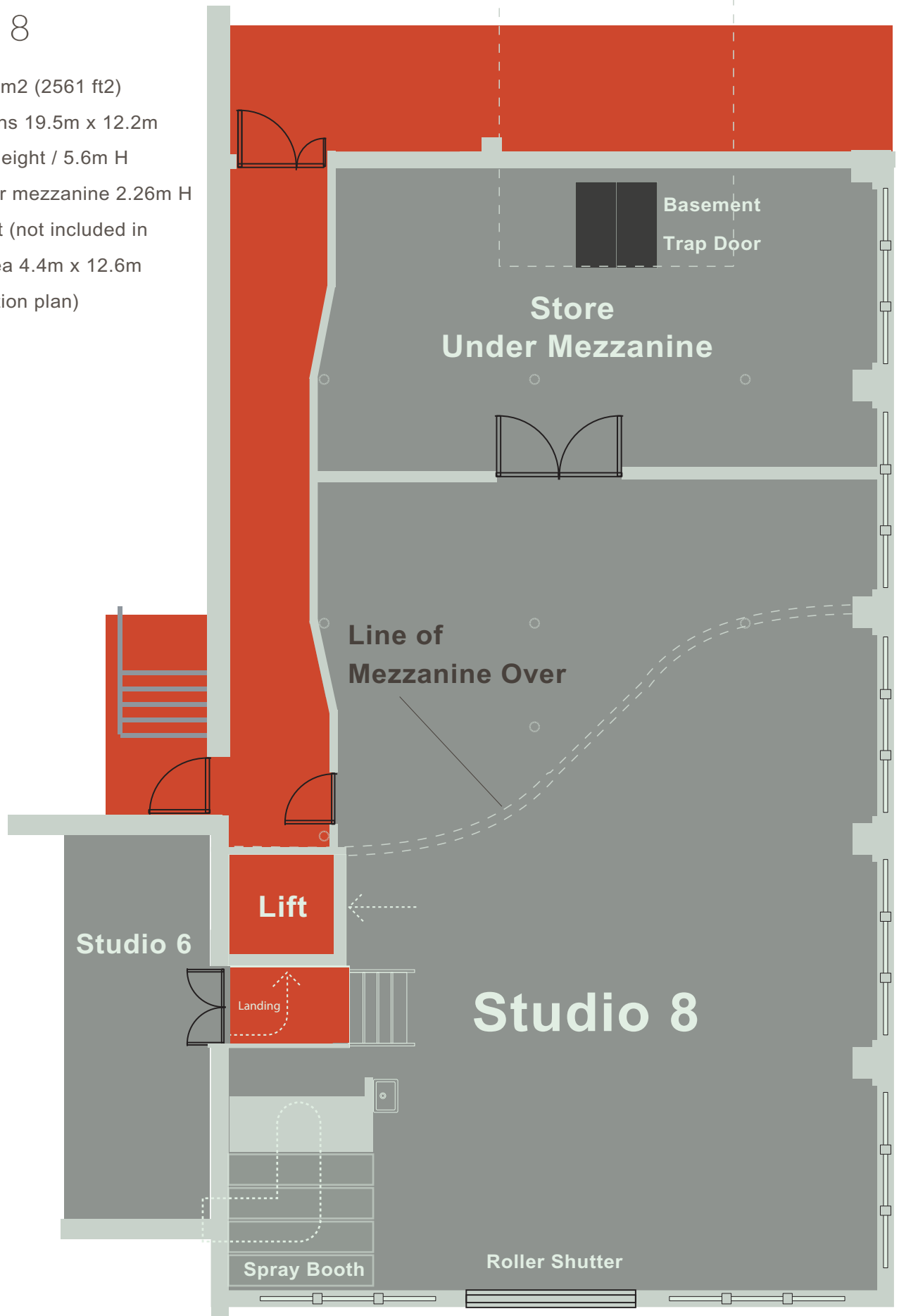
Dimensions 19.5m x 12.2m

Half full Height / 5.6m H

Half under mezzanine 2.26m H

Basement (not included in studio area 4.4m x 12.6m

(see location plan)



# Facilities:

## General

A fully accessible spacious studio with large separate storage room and basement below trap doors  
Excellent natural light, from large leaded windows  
Cargo Lift to Studio 6 and Studio 9 Mezzanine (also suitable for wheelchair users)  
Non Slip coated Concrete Floor.  
Welding area  
Spray booth with extraction wall  
Large electric lamps and fluorescent tubes under mezzanine  
Efficient heating system - gas;  
Independent infra red alarm system and heavy duty door locks on all doors;  
Hard Wired Heat detecting (not smoke) Fire Alarm  
240 volt electricity supply;  
24 hour access  
Fully equipped and accessible by wheelchair users  
Roller shutter door suitable for large vehicles and lorries

## Studio Space

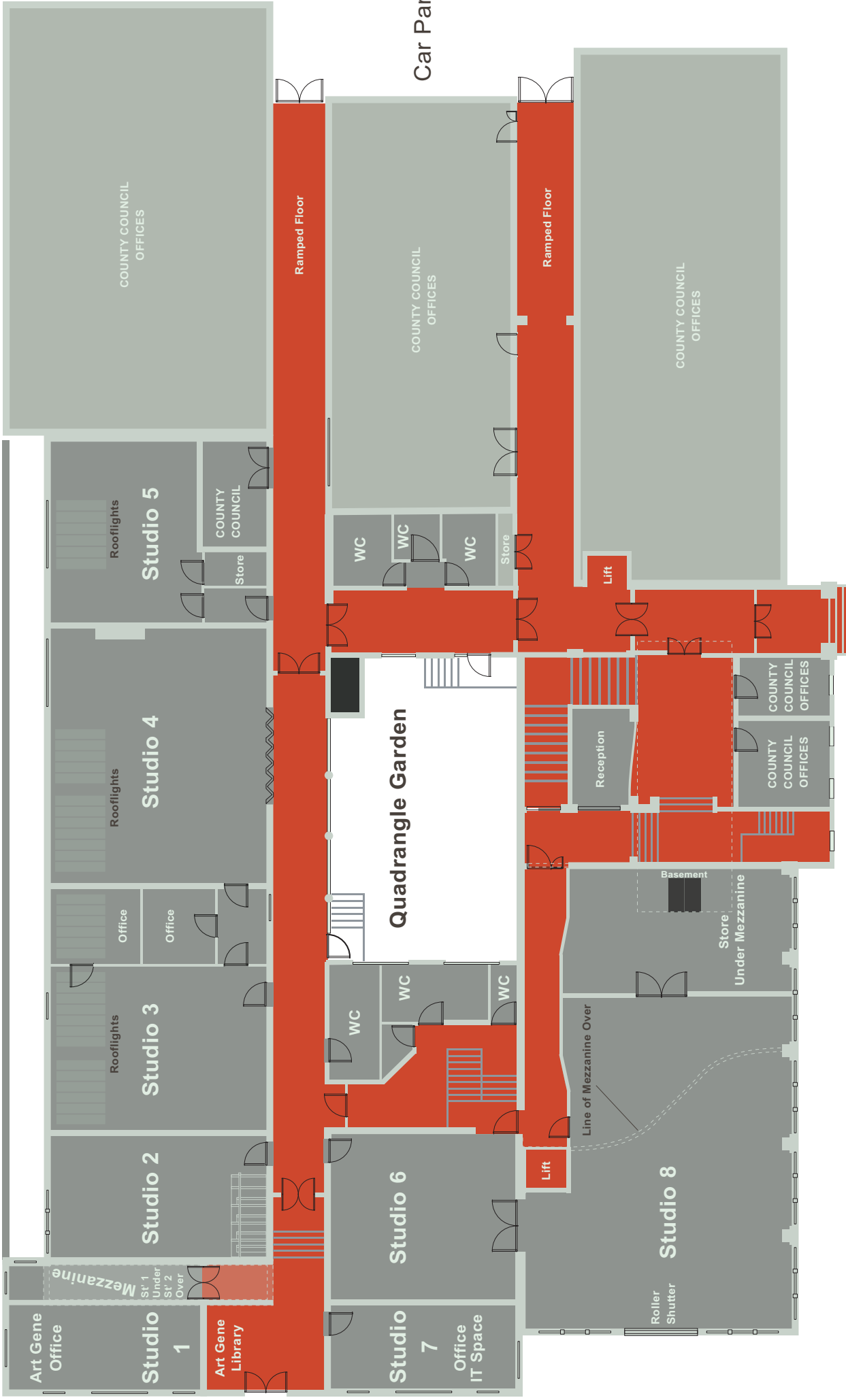
Porcelain 'Belfast' type workshop sink  
Dustbin;  
Broom, Pan and Brush;

## Other Facilities

Shared toilet facilities, including disabled toilet with shower;  
Ramped access from car park for loading and deliveries;  
Technical support, equipment, and additional production facilities may be available.  
(Please submit specific requests when you apply)  
Wireless internet available on the Landing Gallery and  
Ethernet Internet access in Art Gene Library  
Use of industrial vacuum cleaner, mop and other cleaning equipment on request



Collingwood Street

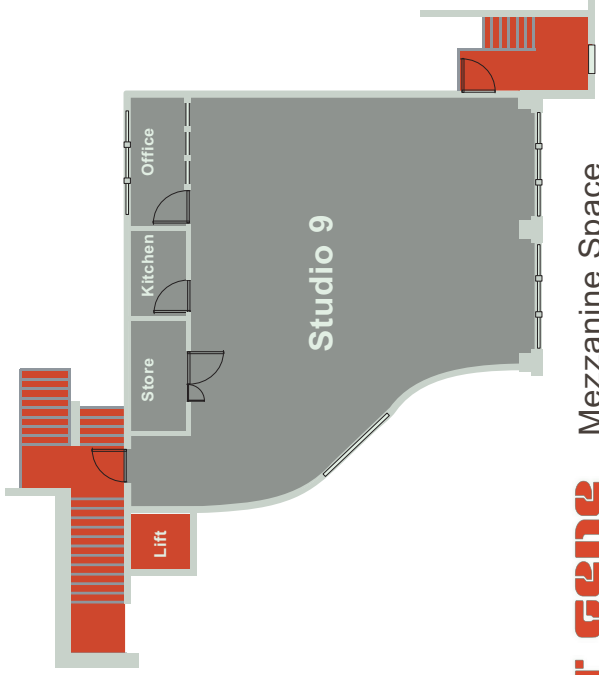


Car Park

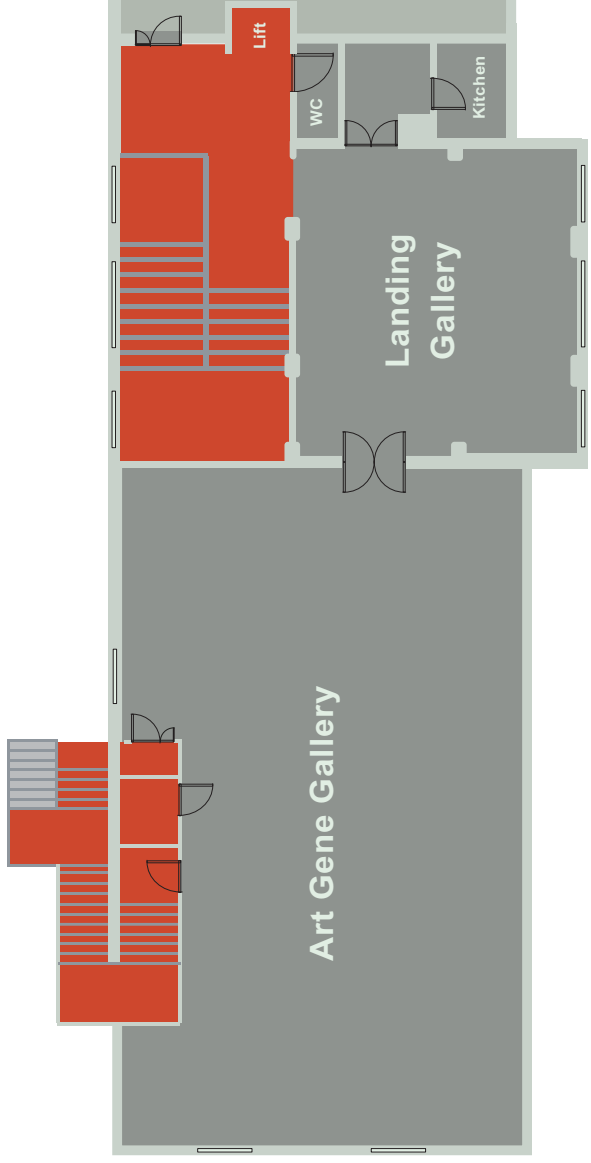
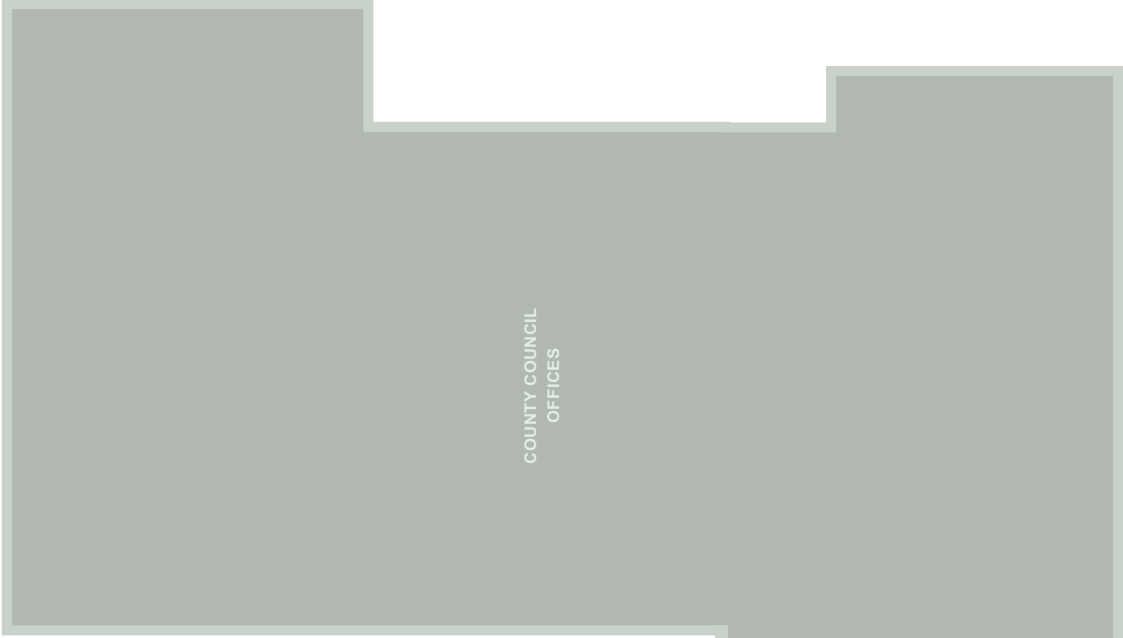
Abbey Road

Main Entrance  
To Gallery

**ART' GENE** Ground Floor Spaces



**ART' GENE** Mezzanine Space



**ART' GENE** First Floor Spaces