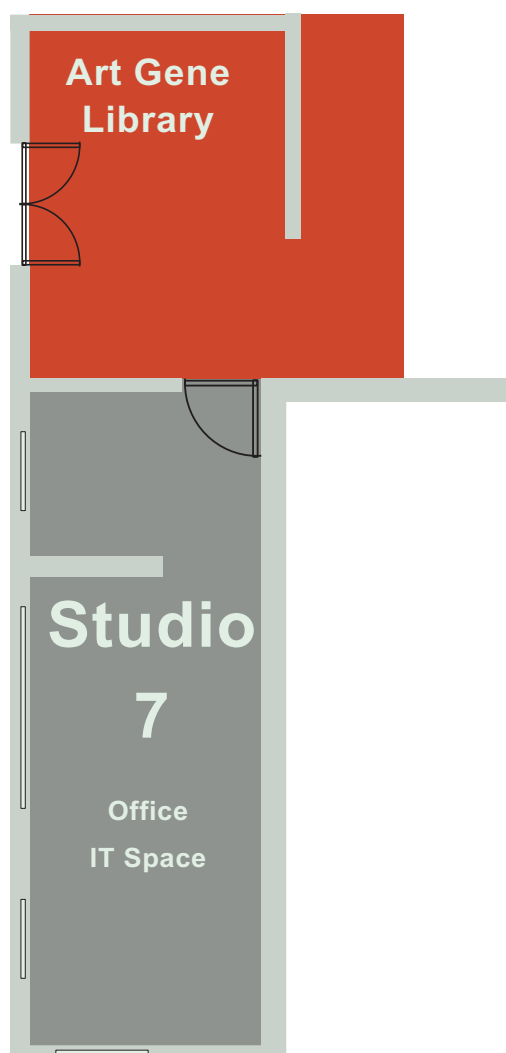


Studio 7 Office IT Space

Area 26. m2 (280 ft2)

Dimensions 8.4m x 3.1m



Facilities:

General

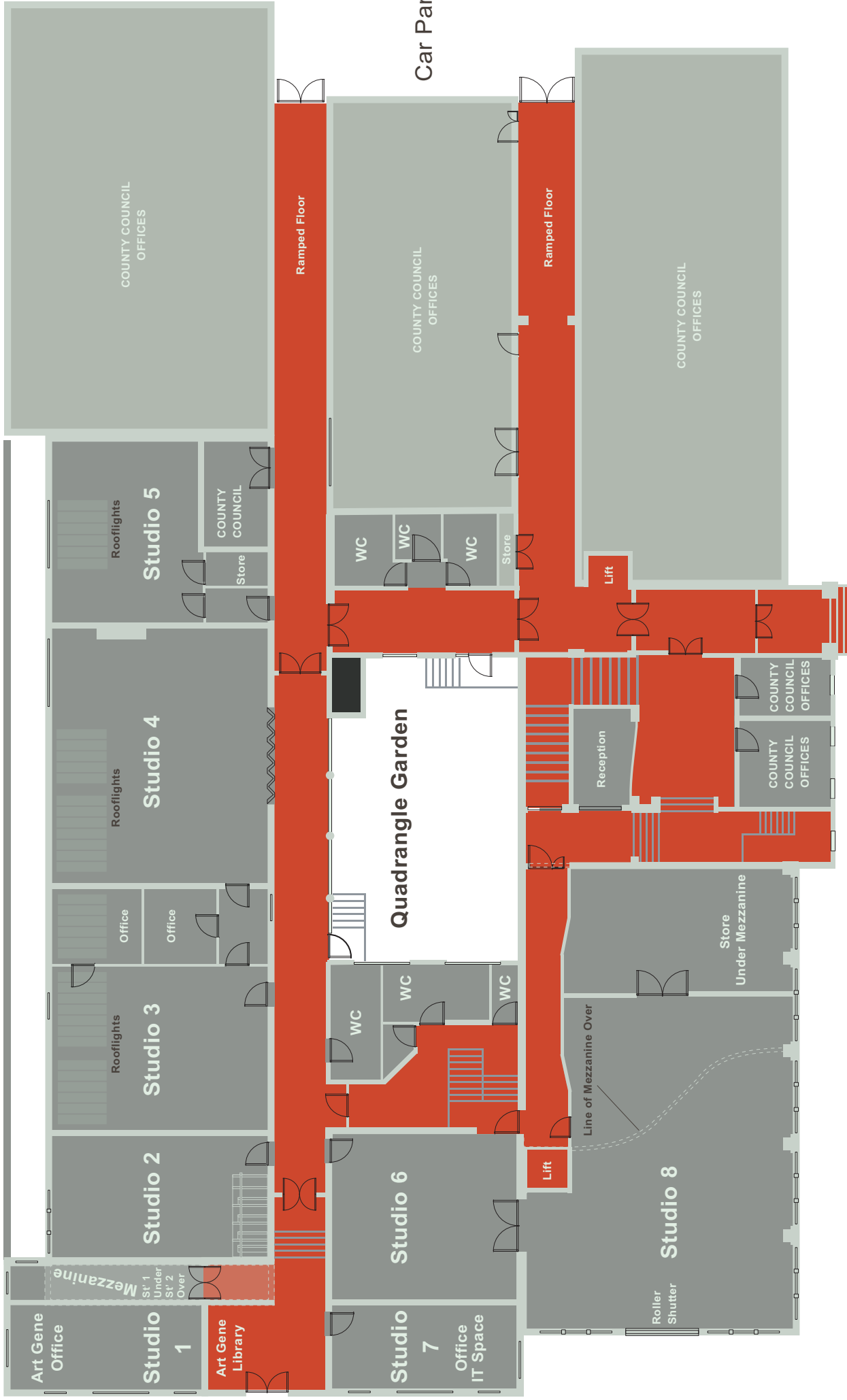
A fully accessible high ceiling studio/office/IT space
Excellent natural light, from large high level windows;
Hard wearing light bamboo laminate floor
Fluorescent lights
Efficient heating system - gas central heating;
Independent infra red alarm system and heavy duty door locks on all doors;
Hard Wired Fire Alarm
Above desk 240 volt socket trunking around room;
Door bell; (rung from beside Car Park entrance door)
24 hour access
Fully equipped and accessible by wheelchair users
Fitted bench style desks with cupboards (seat 4 +)

Other Facilities

Shared toilet facilities, including disabled toilet with shower;
Ramped access and corridor platform lift for loading, deliveries and access - or from Bath Street Door;
Welding area and spray booth (available by prior arrangement).
Technical support, equipment, and additional production facilities may be available.
(Please submit specific requests when you apply)
Wireless internet available on the Landing Gallery and
Ethernet Internet access in Art Gene Library
A telephone landline is connected to the space but may not be active - re-connection fee may be required.
Ethernet Internet access can be arranged within the Studio on request
Use of industrial vacuum cleaner, mop and other cleaning equipment on request



Collingwood Street

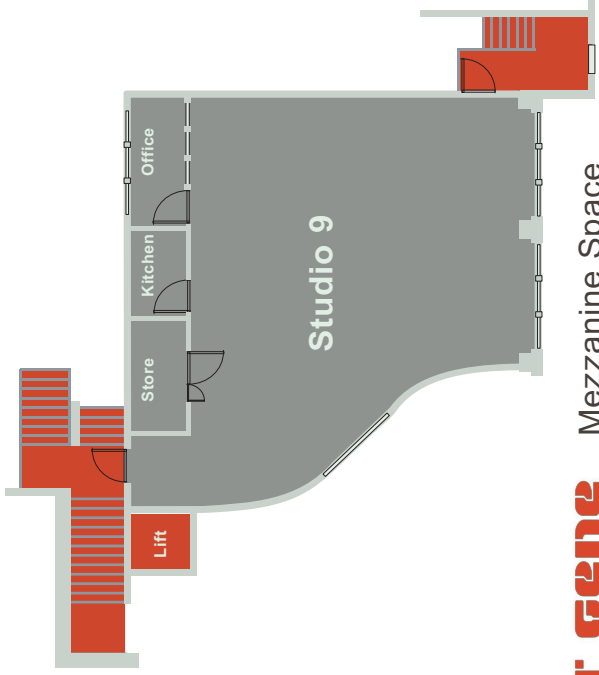


Car Park

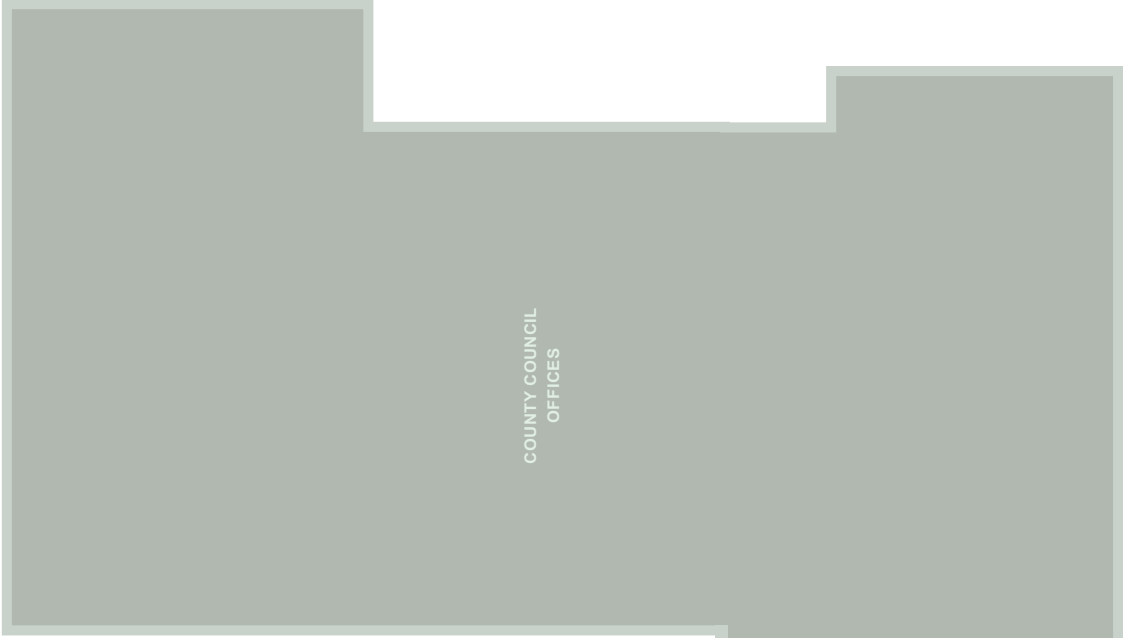
Abbey Road

Main Entrance
To Gallery

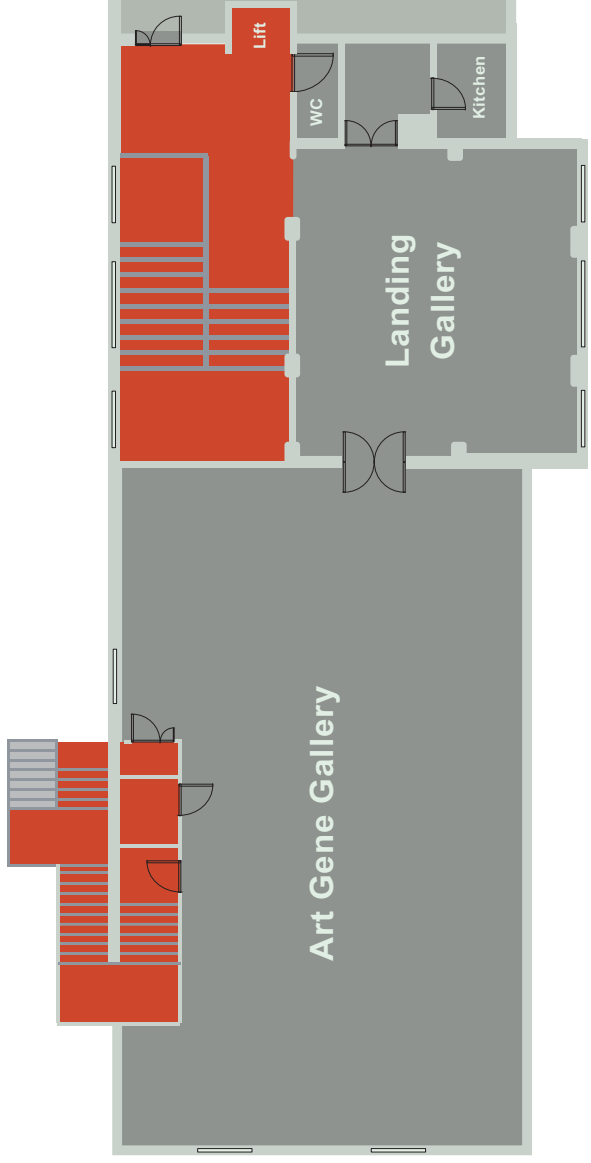
ART' GENE Ground Floor Spaces



ART' GENE Mezzanine Space



COUNTY COUNCIL
OFFICES



ART' GENE First Floor Spaces