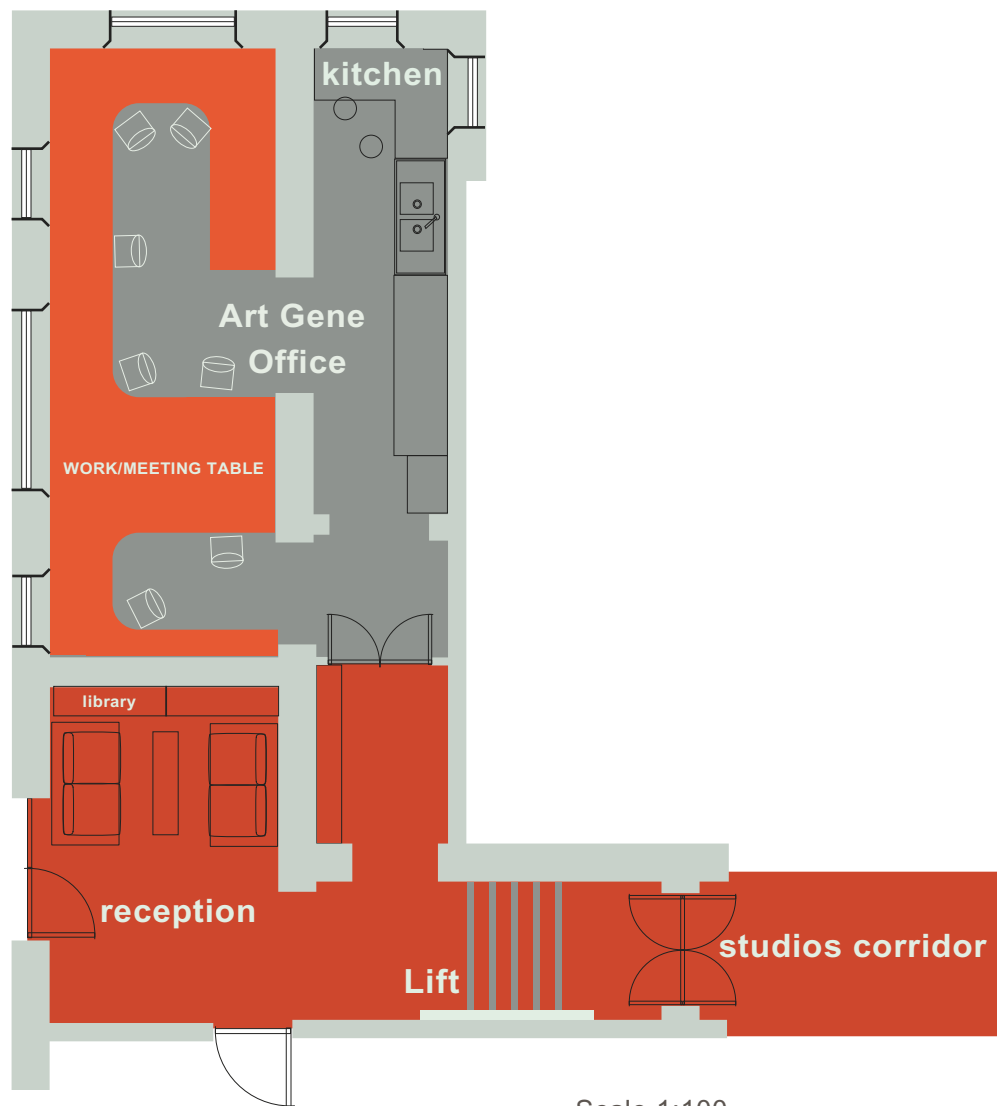


# Studio 1 Hot Desking In Art Gene's Office

A Desk in Office

Office Area 5m x 8m 40m<sup>2</sup> (430 ft<sup>2</sup>)



# Facilities:

## General

A fully accessible spacious modern office  
Excellent natural light  
Carpet tiled floor  
Central heating  
Independent infra red alarm system and heavy duty door locks;  
Hard Wired Fire Alarm  
240 Volt electricity supply from above desk trunking;  
Door bell; (at Bath Street and Car Park entrance doors)  
24 Hour access  
Accessible by wheelchair users  
High Speed Ethernet Broadband connection  
Central Heating

## Kitchen Area

A twin stainless steel kitchen sink unit with mixer tap;  
Work surfaces  
Hot water on demand from multipoint gas boiler;  
Refrigerator;  
Crockery, Cutlery and Glasses;  
Kettle, Toaster, Microwave  
Pedal Bin.  
Filter Coffee Machine

## Office Area

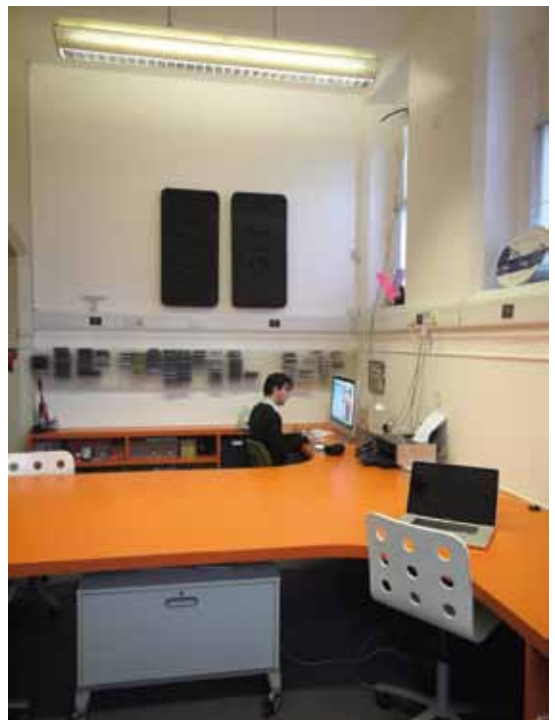
Bench desks around room;  
Desk Lamp.  
Large Work table area and chairs;  
Dust bins - and recycling bins;  
Use of Imac Computer (on request) Office Mac, Photoshop, Illustrator etc.

## Other Facilities

Shared toilet facilities, including disabled toilet with shower facility;  
Ramped access from car park and corridor platform lift for loading and deliveries;  
Technical support, equipment, and additional production facilities may be available.  
Ethernet Internet access in Art Gene Library  
(Please submit specific requests when you apply)  
Wireless internet available in the Landing Gallery and  
Two telephone land lines/fax  
Use of industrial vacuum cleaner, mop and other cleaning equipment on request

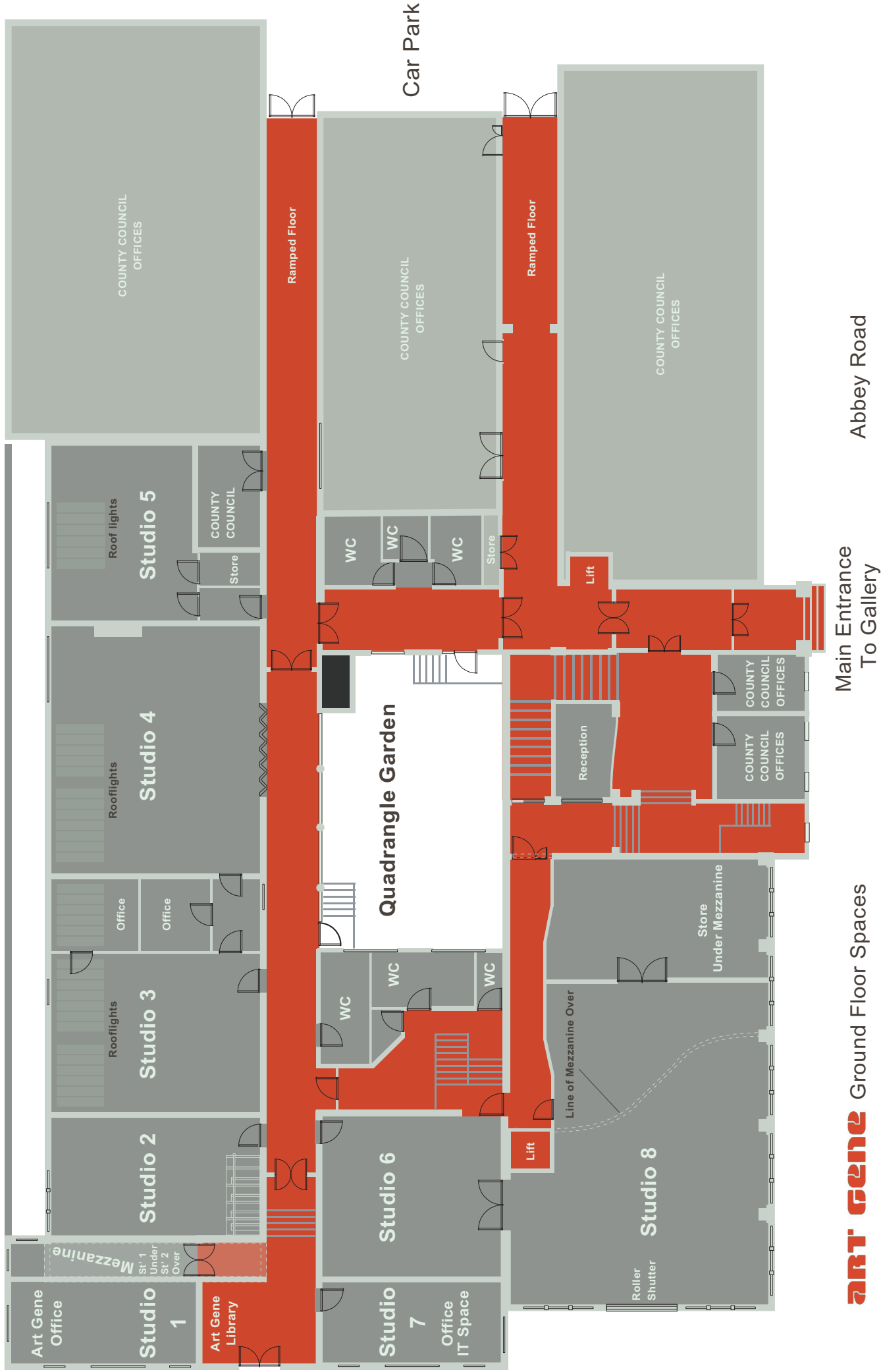


Art Gene Office



Art Gene Office: Robin Goodings, Intern; working on new pages for our website

Collingwood Street

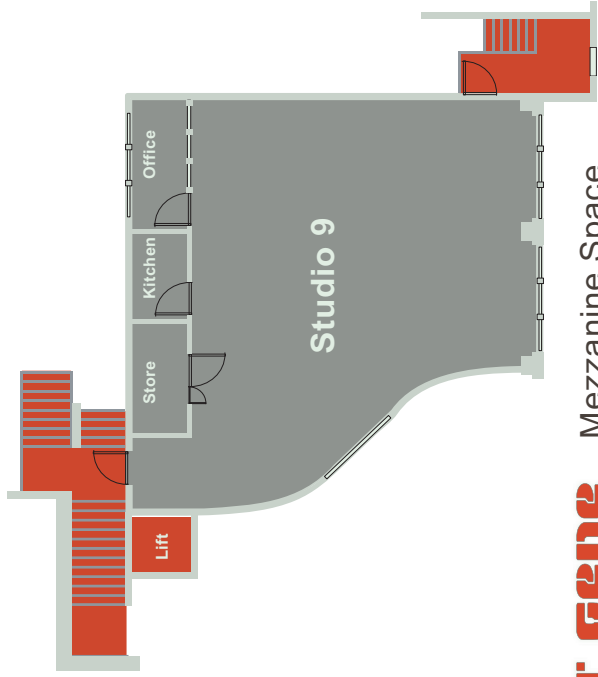


Car Park

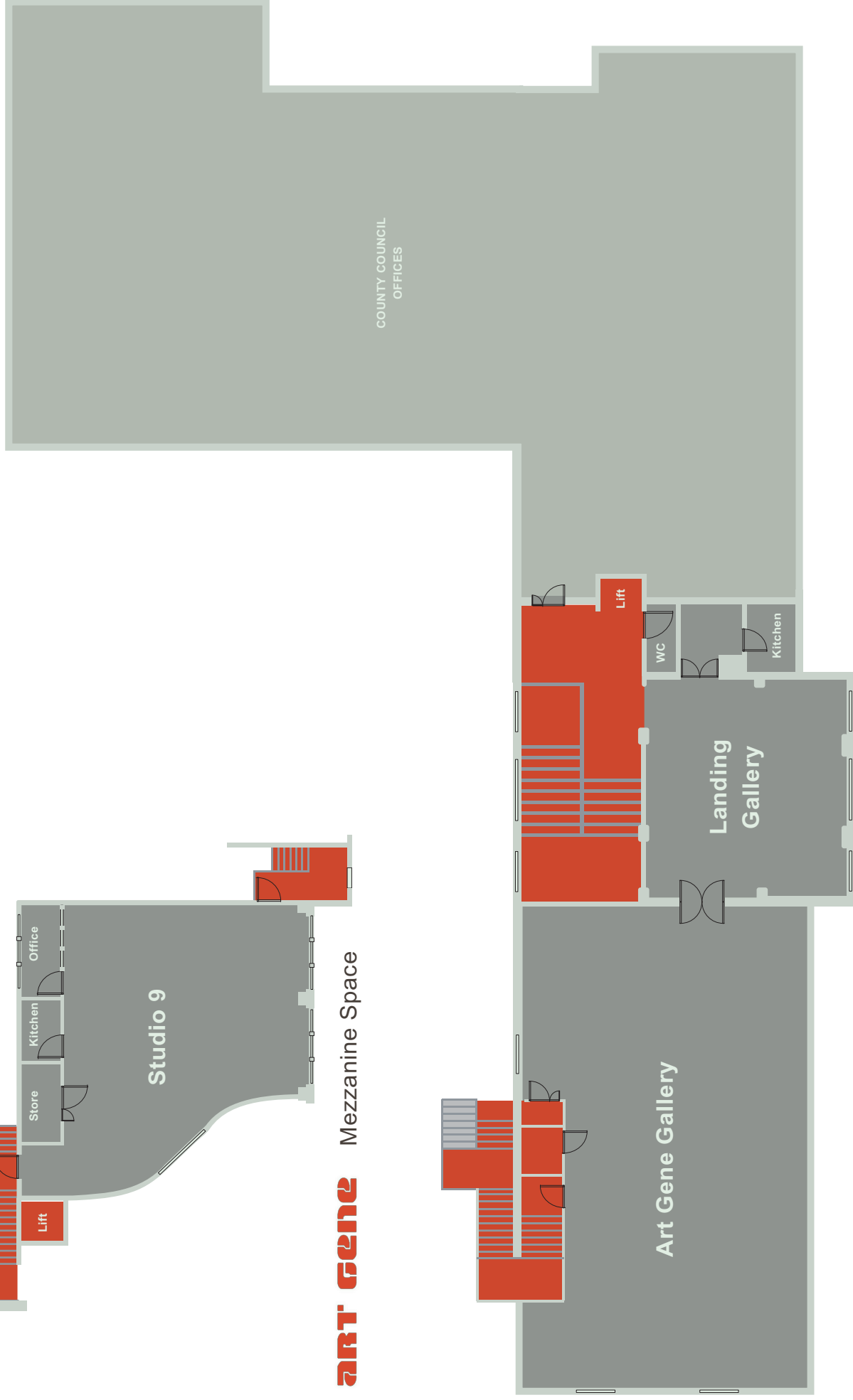
Abbey Road

Main Entrance To Gallery

**ART' GENE** Ground Floor Spaces



**ART' GENE** Mezzanine Space



**ART' GENE** First Floor Spaces